



St. Elizabeth Ann Seton Parish
116 Hughes Street
Swoyersville, PA 18704

The Seton Sentinel

December 20, 2020



Fourth Sunday of Advent

*"The Holy Spirit will come upon
you, and the power of the
Most High will overshadow you.
Therefore the child to be born will
be called holy, the Son of God."*

Luke 1:35

CHRISTMAS SCHEDULE

Please note the changes in this year's Christmas Eucharist Schedule. Again, there is no obligation to attend mass on Christmas this year. We offer the following times for your convenience :

Thursday, December 24— Masses at 2:00 pm, 3:30 pm, 5:00 pm, 8:00 pm and 10:00 pm.

Friday, December 25—Masses at 12:00 am, 8:00 am, 9:30 am, and 11:00 am.

Please note: Reservations are not necessary to attend, however, if the church reaches allowed capacity, you may be asked to come back at another time for a different mass. There is to be no standing room and masks must be worn the entire time you are in the church building and social distancing must be followed. Due to Sanitizing the Church between masses, doors will open approximately 20 minutes before mass, not before.

We hope to Live—Stream the following masses for Christmas: 2:00 pm, 10:00 pm, 12 Midnight, and 9:30 am.

Greet e rs/U she rs N eed ed

As you can see we have a number of masses scheduled for Christmas Eve/Day. It is so important that we have enough people to welcome people in the church, count so that we stay under our corona limits, make sure people are wearing masks, helping them find seats, taking up the collection, etc., People who have not been coming to church these past several months will need direction as they will not know where to sit, how to go to communion, which door to exit, and other COVID practices we have been doing. If you are able to help us in these matter, please call Lori in the office and let us know which mass you'll be at.

Food "Fun" draising

Food items will be offered once again this winter: We have our world famous Pasties, Pot Pies and Cheese Cakes available on dates listed. Please complete the order form on page 3, with the money and get it back to us on or before the deadlines for orders. Let's keep money separate for the food items from the other fundraising and donations that you bring to the church. Use a separate envelope marked, "Altar Guild," or "Food Fundraiser," and use a separate check or cash for that alone. It makes bookkeeping much easier on the finance office.

Confessions

Be mindful that there **will not** be Penance Services or additional Confessions scheduled before Christmas. You are reminded to use "**Perfect Contrition,**" during the present Crisis. *The Conditions for Perfect Contrition are: 1)* for one to pray an Act of Contrition motivated by a love for God beyond all else. *2)* A resolve not to sin again and fully intend to confess all sins to a priest when the COVID restrictions are lifted. Father will also be available before the 5:00 pm Mass on Saturdays in the sacristy if circumstances warrant in person confession. **Wear a mask and keep at least 6 feet apart from Father.**

2021 Church Calendars

The new Church Calendars have been sent home in the mail this year. They are compliments of Wroblewski Funeral Home in Forty Fort. We are particularly grateful to Aaron and Tom for also covering the mailing costs of the calendars. If for some reason, you do not receive yours please call Monica in the office after the 1st of the year.

RELIGIOUS EDUCATION NOTES

In person classes will hopefully resume on January 23rd. Assignments should be completed at home and turned in on time to the Religious Ed Office. Stay Safe Everyone!

Assignments for Nov. and Dec 5/7 should be handed in by December 12th. Slow mail, email, or drop off in parish mail slot (office door), or drop off at office during regular office hours. Make sure the student's name and grade are on the envelope.

Assignments for December 12/14 to January 23/25 can be returned when the children return in January 23/25, **HOPEFULLY!!!**

Please check the parish website setonpa.com or our Facebook page for current updates. Parent meetings for Grades 2, 7 & 8, will also be posted there.

Any questions, please call Sister Marion at 570-287-6624, extension 116.

LECTOR WORKBOOKS 2021

Lector Workbooks for Year B 2021 are located in the server sacristy. If you are not attending Mass right now, we will hold your book in the Server Sacristy until you are able to return.

PASTIES
\$7.00 EACH

ST. ELIZABETH ANN SETON ALTAR GUILD
HOMEMADE PASTIES ORDER FORM \$7.00 EACH
SALE DATE IS THURSDAY, JANUARY 14th, 2021
(ORDERS DUE BY THURSDAY, JANUARY 7th)

PASTIES
\$7.00 EACH

NAME: _____ PHONE: _____ EMAIL: _____

QUANTITY: #WITH ONION: _____ # NO ONIONS: _____ TOTAL AMOUNT DUE: \$ _____

PICK-UPS ARE IN SCHOOL CAFETERIA: SOCIAL DISTANCING & MASKS ARE REQUIRED

Please check your pick up time: 12noon to 2pm _____ or 5pm-6pm _____

Make check/money order payable to: St. Elizabeth Ann Seton Parish

PLEASE SEND IN PAYMENT WITH ORDER. PAY BY CHECK _____ OR MONEY ORDER _____

Drop off order form & check at the rectory office door/mail slot, drop in collection basket, or mail to:
St. Elizabeth Ann Seton Altar Guild, 116 HUGHES ST., SWOYERSVILLE, PA 18704

POT PIES
\$7.00 EACH

ST. ELIZABETH ANN SETON ALTAR GUILD
CHICKEN POT PIE ORDER FORM \$7.00 EACH
SALE DATE IS THURSDAY, JANUARY 28th, 2021
(ORDERS DUE BY THURSDAY, JANUARY 21st)

POT PIES
\$7.00 EACH

NAME: _____ PHONE: _____ EMAIL: _____

QUANTITY: # of Chicken Pot Pies @\$7 EACH: _____ TOTAL AMOUNT DUE: \$ _____

PICK-UPS ARE IN SCHOOL CAFETERIA: SOCIAL DISTANCING & MASKS ARE REQUIRED

Please check your pick up time: 12noon to 2pm _____ or 5pm-6pm _____

Make check/money order payable to: St. Elizabeth Ann Seton Parish

PLEASE SEND IN PAYMENT WITH ORDER. PAY BY CHECK _____ OR MONEY ORDER _____

Drop off order form & check at the rectory office door/mail slot, drop in collection basket, or mail to:
St. Elizabeth Ann Seton Altar Guild, 116 HUGHES ST., SWOYERSVILLE, PA 18704

8" CHEESECAKE
\$12.00/plain
\$13/raspberry
topping

ST. ELIZABETH ANN SETON ALTAR GUILD
CHEESECAKE ORDER FORM
SALE DATE IS THURSDAY, FEBRUARY 11th, 2021
(ORDERS DUE BY THURSDAY, FEBRUARY 4th)

8" CHEESECAKE
\$12/plain
\$13/raspberry
topping

NAME: _____ PHONE: _____ EMAIL: _____

QUANTITY: # of PLAIN CHEESECAKES: _____ # of RASPBERRY CHEESECAKES: _____ TOTAL AMT DUE:\$ _____

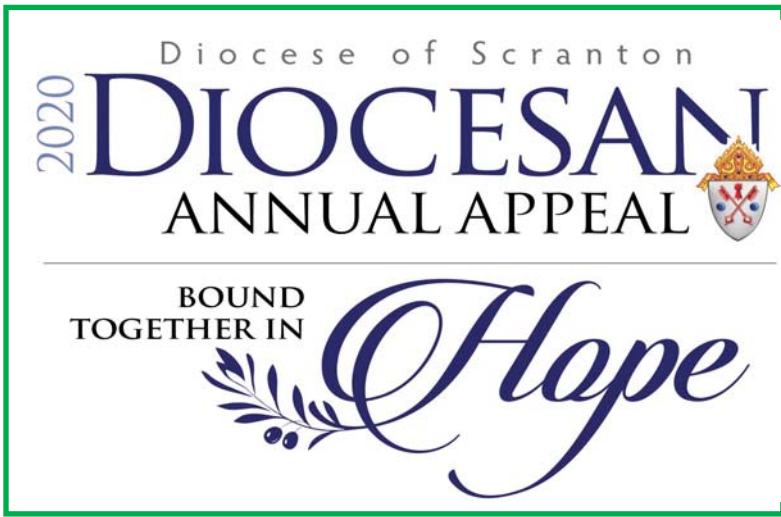
PICK-UPS ARE IN SCHOOL CAFETERIA: SOCIAL DISTANCING & MASKS ARE REQUIRED

Make check/money order payable to: St. Elizabeth Ann Seton Parish

Please check your pick up time: 12noon to 2pm _____ or 5pm-6pm _____

PLEASE SEND IN PAYMENT WITH ORDER. PAY BY CHECK _____ OR MONEY ORDER _____

Drop off order form & check at the rectory office door/mail slot, drop in collection basket, or mail to:
St. Elizabeth Ann Seton Altar Guild, 116 HUGHES ST., SWOYERSVILLE, PA 18704



Diocesan Annual Appeal Update

2020 Goal:	\$44,000.00
Raised so far:	\$25,245.00
Needed:	\$18,755.00

Thank you to all who gave so far. Envelopes are on the tables at the church entrances or go to dioceseofscranton.org and select "GIVING." to make an online donation Please consider giving today.

PARISH OFFERINGS

Our Parish remains open and operating solely because of your generosity. We cannot thank you enough for all that you do for us through the year, especially during the pandemic. If you can continue to remember your envelopes and get them to us each week via slow mail, the office mail slot, the collection basket, or on-line giving at setonpa.com we can continue our mission together. Christmas is a good time to catch up on your offerings if you are able. The year will close for 2020 offerings on January 1, 2021. Anything received after that date will be credited to 2021.

Because of the early deadline, last weeks totals are omitted from this bulletin.

LIFE LINE SCREENING

Life Line Screening, the nation's leading provider of preventive health screenings, will offer affordable, non-invasive and painless health screenings at St Elizabeth Ann Seton Parish on Thursday, January 14, 2021

A package of five screenings to identify risk for stroke, heart disease and other chronic conditions will be offered:

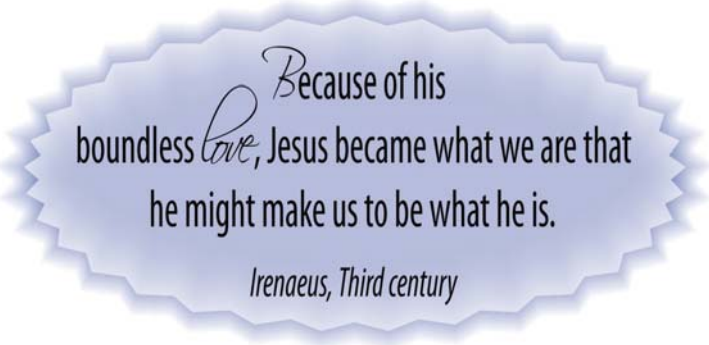
- Carotid artery ultrasound to identify plaque buildup in the carotid arteries, a major risk factor for stroke
- Abdominal aortic aneurysm ultrasound to identify presence of an enlargement in the largest blood vessel in the body
- An EKG to identify the presence of atrial fibrillation, which increases the risk for stroke
- Ultrasound of the lower legs to look for plaque buildup known as peripheral artery disease
- Ultrasound of the shin bone to identify risk for osteoporosis

These 5 vital screenings are offered for only \$149 and take 60-90 minutes to complete. If you register today, you will receive a \$10 discount.

Register by calling toll free 1-888-653-6441 or text the word "circle" to 797979.



PARISH OFFICE HOURS FOR CHRISTMAS SEASON
(WED.) DECEMBER 23RD-OFFICE CLOSSES AT 3PM
(THURS.) DECEMBER 24TH-CLOSED
(FRI.) DECEMBER 25TH-CLOSED
(WED.) DECEMBER 30TH-OFFICE CLOSSES AT 3PM
(THURS.) DECEMBER 31ST-CLOSED
(FRI.) JANUARY 1ST-CLOSED



EUCCHARIST SCHEDULE & INTENTIONS

Monday, December 21

6:30 am Health & Blessings for Allied Services Meade St. Residents Dorothy Shendock

Tuesday, December 22

8:00 am Larry Hilenski Sr. Donna Piekanski

Wednesday, December 23

8:00 am Ronnie Gibbons Sister, Pat Quinn & Family

Thursday, December 24

2:00 pm Christmas Intention of the Presider*

3:30 pm Christmas Intention of the Presider (Fr. Louis Grippe)

5:00 pm Christmas Intention of the Presider *

8:00 pm Christmas Intention of the Presider (Fr. Anthony Urban)

10:00 pm Christmas Intention of the Presider *

Friday, December 25

12MID Christmas Intention of the Presider *

8:00 am Christmas Intention of the Presider (Fr. Leo McKernan)

9:30 am Christmas Intention of the Presider *

11:00 am Christmas Intention of the Presider *

Saturday, December 26

5:00 pm Ann Gagliardi Denise Cremard

Sunday, December 27

7:00 am Christmas Mass Intentions

9:00 am Rosarii Rosentel Sons & Families

11:00 am Richard Mizenko Wife, Gloria

5:30 pm John & Mary Mattie Children

*The Intention of Father Joe's Masses will be your Christmas Intentions.



This Week's Sanctuary Candles

1. In Memory of Raymond Gustave offered by Frank & Paula Matthews
2. In Memory of Louis Michaels offered by Family



The Christmas tree

is "an ancient custom that exalts the value of life" because the evergreen tree remains unchanged through the harshness of winter. When gifts are arranged under the tree, it becomes a symbol of "the tree of life, a figure of Christ, God's greatest gift to all".

~ Pope John Paul II

SETON SENTINEL

Pastoral Ministry

- Rev. Joseph Pisaneschi, V.F. Pastor
X 105 fatherjoey@aol.com
- Rev. Anthony Urban
Assisting Celebrant
- Deacon John Ziegler, Permanent Deacon
x 130
- Lorraine Raymond, Pastoral Associate
X 100 setonpa@aol.com
- Sister Jane Ellis, IHM, Pastoral Care Minister
x117 sisterjane@setonpa.com
- Mr. John Bankus Sr., Deacon Candidate

Finance Office

- Monica Salis, Business Manager
X 113 seton.swoy@aol.com

Religious Education x 3

- Sister Marion Tarone, IHM
Director of Religious Education x116
sistermarion@setonpa.com

Music Ministry

- Margaret Semanek, Director of Liturgical Music
- Joseph Sabol, Assistant Organist
- Cora Artim, Youth Choir Director
- Scott Coates, 5:30 PM Mass Musician

Sacristans

- Christopher Calore x 133
- Patricia Quinn
- Betsy Evanski

Maintenance and Cleaning

- Christopher Calore, Director of Maintenance
X 133
- Gertrude Brown
- John Sartin
- Phil Bosha, St. Mary's Cemetery

Pastoral Council Chair

- Ann Marie Aed

Finance Council Chair

- Michael Perhach

St. Elizabeth Ann Seton Parish

116 Hughes Street

Swoyersville, PA 18704

Phone (570) 287-6624

Fax (570) 287-4704

Web: setonpa.com

All Are Welcome in this Place

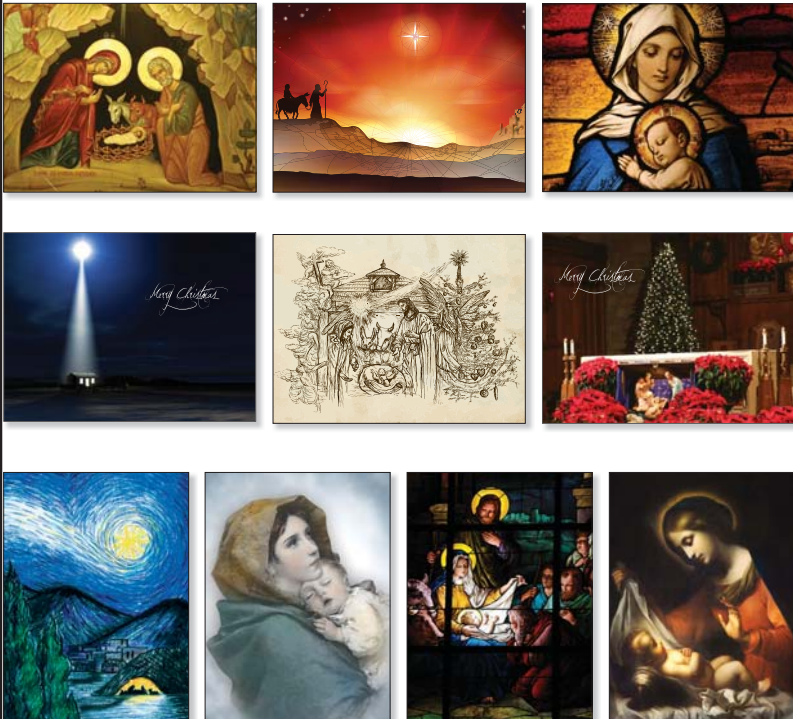
No matter what your present status in the Catholic Church, No matter what your current family or marital situation, No matter what your current personal history, age, income, background, gender, race, ethnicity or spirituality, No matter what your own self-image or holiness or virtue - You belong to Christ and belong to us! You are invited, accepted and respected here at Saint Elizabeth Ann Seton Parish. We welcome you. We want to share our Roman Catholic way of life with you!



ORDER YOUR CHRISTMAS CARDS TODAY

Order Today at www.PilotPrintingShop.net

View Inside Verses in our Online Store



PRICE

25 Cards for \$28.99
 50 Cards for \$44.99
 100 Cards for \$68.99

Price Includes Blank Envelopes and Shipping

10 Different Options Available

Select All of One Design or Mix and Match

For More Information: printing@pilotprinting.net



Catholic Cruises and Tours

Take your
**FAITH ON A
 JOURNEY**

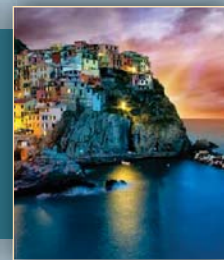


Catholic Cruises and Tours and The Apostleship of The Sea of the United States of America

Mass is included with all of our tours!

Catholic Cruises and Tours to Worldwide Destinations

- Holy Land Discovery • Fatima, Lourdes and Shrines of Spain • Grand Catholic Italy • Footsteps of Apostle Paul • Shrines of Alpine Europe • Pilgrimage to Lourdes • Scottish Highlands
- Camino, A walking journey for the soul



Call us today at 860-399-1785 or email Janet@CatholicCruisesandTours.com
www.CatholicCruisesandTours.com



Aaron W. Pietryka, *Licensed Supervisor - Parishioner*
 Thomas B. Wiedlich, *Licensed Director - Parishioner*

570-287-8541 | 1442 Wyoming Avenue, Forty Fort, PA
www.wroblewskifuneralhome.com

BONNER

FIND NEW ROADS™
 NEW 287-2117
 USED 288-0319
 694 Wyoming Ave., Kingston, PA
www.bonnerchevrolet.com

Holy Trinity
 Off of Warsaw Street
 &
St. Mary's
 Off of Brook Street
Cemeteries
 †
 Lots Available
 Interest Free
 payment plans




Please call the Parish Office for more information at 287-6624

B *Bednarski*
Funeral Home
 168 Wyoming Ave.
 Wyoming, PA
570-693-3851
Funeral Directors
 Joseph Bednarski
 Jacqueline Bednarski

Remember to say
“Thank You”
 — to our —
WONDERFUL Sponsors

We extend our sincere appreciation to our sponsors, without whom this bulletin would not be possible.

First Catholic Slovak Union
FCSU Financial®
 Annuities • Life Insurance • IRAs
 Final Expense • Education Savings
 Wealth Transfer
Get \$10,000 term life insurance for \$14
(annually until age 25)
 Annuity interest rates as high as 3.85%...
 • 6/8 Year Flexible Premium Deferred Annuity
 • 6 Year Fixed Rate Annuity
www.fcsu.com
 Martha Zavada: (570) 954-3771

FORTY FORT

LUBE & SERVICE
FORTY FORT | **KINGSTON**
570-718-1501 | **570-283-1504**

“Jesus Wept.” *John 11:35*

Frank Grontkowski
Monuments Inc.
 Established in 1942
 Family owned & operated



DEDICATED TO MEETING YOUR MONUMENT NEEDS
570-822-5574
grontkowskimonuments.com

Lunch Specials Daily!
 Mon-Fri 11am-2pm
Dinner
 Mon-Thurs 4pm-9pm
 Fri-Sat 4pm-10pm

- Family Atmosphere
 - Made from Scratch Menu
 - Reasonable Prices
 - Large Portions!

258 Charles St. Luzerne, PA
www.andyperuginos.com
570-288-5337

AD SPACE AVAILABLE
 617-779-3771


 841 Main Street
 Tewksbury, MA 01876
 (978) 851-9103
Rosaries from Flowers
“Handmade from the Flowers of your Loved One”
www.rosariesfromflowers.com

ADVERTISING SALES
PART TIME. WORK FROM HOME.

Sell Ads for this Bulletin and more.
 Contact us or send your resume to
hr@thepilot.com

HUGH B. HUGHES & SON, INC.
 Michael W. Harrison, Supervisor / President
 Daniel R. Harrison, Funeral Director
Funeral Home
570-288-9341
 1044 Wyoming Ave. Forty Fort, PA
Traditional, Cremation & Pre-arranged Funerals
 Visit our website at hughbhughes.com • Online condolences now available

Lincoln Heritage
 LIFE INSURANCE COMPANY


Whole Life Insurance - NO MEDICAL EXAM
 24-hour Payout | Free Funeral Planning | Ages 0 to 85
 98 % coverage | Plans as low as \$15 a month | Rates never increase
Steve Urbanski - Licensed Underwriter - 570.899.7058