

SETON SENTINEL

July | 7 | 2024

ST. ELIZABETH ANN SETON PARISH

FESTIVAL

THURSDAY • FRIDAY • SATURDAY
5 PM 'til 11 PM NIGHTLY

JULY 11-12-13

116 HUGHES ST. SWOYERSVILLE
GAMES – PRIZES – REFRESHMENTS
DELICIOUS HOMEMADE FOOD

Thursday – JOHN STEVENS' DOUBLESHOT

Friday – HOOPLA

Saturday – PICTURE PERFECT

Everyone Welcome!!

St. Elizabeth Ann Seton
116 Hughes Street
Swoyersville, PA 18704
570-287-6624

Eucharist

Monday-Tuesday-Thursday &
Friday 8:00am

No Mass on Wednesday

Saturday 4:00pm (vigil)

Sundays 8:30am, 11:00am &
5:30pm

Connect with us:



Confessions:

Saturday 3:30-3:45pm or you
may call Fr. Chmil for an
appointment



Worship

Intention

Monday, July 8

8:00am Eugene & Ruth Slusser

Tuesday, July 9

8:00am Mary Beth Hanadel

Wednesday, July 10

No Daily Mass

Thursday, July 11

8:00am John & Nancy Bankus

Friday, July 12

8:00am Terry Jankoviak

Saturday, July 13

4:00pm Joseph Podskoch

Sunday, July 14

12:00am (after festival) George Barilla

8:30am Health & Blessings for the Rusnak Family

11:00am Robert Stitzer

5:30pm Harry Yekel

Requested by

Family

Husband, Carl & son, Andrew

Joe & Terri Burgess

Family

Daughter, Theresa

Felix Wawer

Rusnak Family Reunion

Ross T. Graham

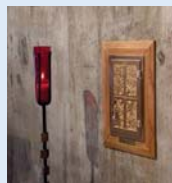
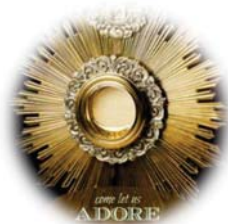
Deacon & Mrs. John Bankus & Son

Prayer

ADORATION OF THE BLESSED SACRAMENT

***Please join us on Thursday evenings
from 6pm to 8pm in the church.***

***Come spend a few
minutes or longer
with Jesus in the
Blessed Sacrament.***



SANCTUARY CANDLE INTENTIONS

~~In Memory of ~~**John & Theresa Charney**~~ offered by
Children, Grandchildren, & Great-grandchildren

~~In Memory of ~~**Terry Jankoviak**~~ offered by Family



FLOWERS THIS WEEKEND

~~In Memory of ~~**Terry Jankoviak**~~ offered by Family



ROSARY FOR VOCATIONS

***The Rosary will be prayed for vocations after
daily mass.***

Parish Staff

Rev. John J. Chmil

Pastor

Rev. Anthony Urban

Assisting Celebrant

Deacon John Bankus

Deacon John (Jack) Ziegler

Permanent Deacons

Lori Raymond

**Pastoral Associate/Director of
Religious Education**

Sister Mary Beth Makuch, SS.C.M.

Pastoral Outreach Ministry

Music Ministry

Marge Semanek

Director of Liturgical Music

Joseph Sabol

Accompanist

Scott Coates

Accompanist

Pat Quinn

Office Assistant

Sacristans and Maintenance

Chris Calore

Director of Maintenance

John Sartin

Trudy Brown

Pat Quinn

Betsy Evanoski

Phil Bosha

Office Hours

Monday through Thursday
8:30am to 3:00pm

CLOSED FRIDAY

Weekends and Evenings
by appointment.

570-287-6624

PRE-SELLING FESTIVAL FOOD TICKETS

We ARE **PRE-SELLING** our food tickets THIS WEEKEND in the church vestibule, before and after all weekend masses. Get your tickets early & avoid the long lines. A menu price list will be available at the table. Tickets are sold in increments of 50 cents.

VOLUNTEERS--St. Elizabeth Ann Seton needs you!!! If you haven't volunteered to work the festival yet, please see Lori in the vestibule before and after all weekend masses to see where help is still needed. Thank you!!!!

FESTIVAL PIGGIE-MAKING MONDAY & TUESDAY

MONDAY and TUESDAY, JULY 8th and 9th. Deveiners come at 7am. Rollers come at 8:30am. We need your help.

FESTIVAL RAFFLE TICKETS: Please return all raffle tickets as soon as possible. Please put your name and address on your return envelope.

KOUNTRY KITCHEN STAND: Please return the filled buckets **this weekend** to the church vestibule. Thank you! Your generosity is greatly appreciated!

PARTY TYME STAND: We are still accepting donations of **12-packs of beer and liquor.** Bring to the rectory by this Wednesday during regular office hours.

CHILDREN'S TOYS: Small toys needed! Inexpensive as from the Dollar Stores, but must be NEW!

THEME BASKETS: We are asking you to create baskets with a value of at least \$40+. Suggested themes are Baker's Basket, Car Care, Pet supplies, hair care, beach, seasonal, small appliances, bath & bed items, etc. Please have basket wrapped and ready to display with a list of items contained by **this Wednesday to the rectory.** Please call **Elaine Lipinski at 570-762-2440** or **Shaina Aquilina at 570-709-8953 for more info.**

BAKE SALE: Food tickets will now be used for our Bake Sale Stand, instead of cash. All parishioners & friends are asked to contribute baked goods, if possible. If your last name begins with letters A-G, you are asked to bake for Thursday, H-R for Friday, and S-Z for Saturday. Or whatever works best for you. Please do not send items that would need refrigeration or would melt in the heat. Thank you!

FESTIVAL PARKING: Please be very careful when parking for the upcoming festival or anytime near the church. Be sure that you are not blocking anyone's driveway, and please obey parking rules as posted, to avoid getting a parking ticket. Thank you for your cooperation.



FESTIVAL 2024 JULY 11-12-13

FESTIVAL SUPPLIES NEEDED: *UPDATED WEEKLY*

KETCHUP

6"x6" Styrofoam containers (clam shell)

9"x9" Styrofoam SINGLE compartment containers

A large box for donations is in our vestibule, or you may bring to the rectory during regular office hours.

Thank you !!!!!

Please see VOLUNTEER FORM on page 6---St. Elizabeth Ann Seton Parish needs YOU!

PARISHIONERS & FRIENDS: The Saint Elizabeth Ann Seton Summer Festival is July 11, 12, & 13, and I'm asking local merchants for their support. These sponsorships help with our upfront costs to prepare for the festival: food preparation, stand set-ups, & prizes for the games. I am asking for your help with a Festival Sponsorship of \$50.00 or more.* A sponsor sign (18"x24") with your name or company name will be placed on the grounds at the Festival, which will be seen by hundreds of people in our community during the 3-day festival. If you can help us out this year, kindly fill out the form below and send it back in an envelope marked "SPONSOR". (If you have donated in the past, we thank you very much, and hope you continue to support us. We already have your sign, and will be able to use that sign). **Signs can also be sponsored by families & friends, and in Memory of loved ones.** Thank you and God's blessings, Fr. John

\$50.00 SPONSORSHIP = 18"L X24"w SIGN

\$100.00 SPONSORSHIP=12" L X 36" w SIGN

\$150.00 SPONSORSHIP= 12"L X48"w SIGN

PLEASE USE FORM BELOW↓↓↓

SAINT ELIZABETH ANN SETON PARISH FESTIVAL 2024 SPONSOR FORM

Your name: _____ Phone : _____

SIGN INFORMATION ↓↓↓

Name or BUSINESS NAME **you want on sign:** _____

Phone Number: (optional---if you want it printed on sign): _____

Please check your **choice of SPONSORSHIP:**

\$50.00 (18"x24" sign) _____ \$100.00 (12"x36" sign) _____ \$150.00 (12"x48" sign) _____

Amount enclosed: \$ _____ CASH _____ CHECK _____

ANY QUESTIONS, PLEASE CALL LORI AT THE PARISH OFFICE: 570-287-6624

FIRST HOLY COMMUNION & CONFIRMATION PHOTOS ARE HERE:

PARENTS: [First Holy Communion and Confirmation photos can be picked up in our parish office MONDAY-THURSDAY, 9AM-3PM, OR CALL LORI TO MAKE ARRANGEMENTS.](#)

VOCATIONS “My grace is sufficient for you.” Consider a calling to the priesthood or consecrated life. God’s grace is all you need. Talk to your priest or reach out to the Vocation Office at 570-207-1452 or via email: info@dioceseofscranton.org

WORD OF LIFE

“O God our Creator...through the power and working of You Holy Spirit, You call us to live out our faith in the midst of the world, bringing the Light and Saving Truth of the Gospel to every corner of society.”
USCCB “Prayer for Religious Liberty”

SISTERS OF SAINTS CYRIL AND METHODIUS FESTIVAL

Come to the Summer Festival in Danville, PA, on Saturday, July 13, 2024, at the Villa Sacred Heart for Fun-Food-Baked Goods-Flea market-Bingo-Silent Auction and MORE. Transportation will be provided by the First Catholic Slovak Ladies Association. Cost is \$20 with a gift. Martz Bus leave Wilkes-Barre at 8:30am, departs Danville at 3:30pm For reservations, call Martha Iskra at 570-824-0216.

VBS Camp Firelight

Monday, July 29th -Friday, August 2nd, at Conlan Hall, St. Ignatius, Kingston. 9:30am-noon for students who have completed pre-K to grade 5. Cost is \$10/student. For further information or to register please contact the Religious Ed Office at 570-287-3682 or religiouseducation1@yahoo.com

ANNUAL SUMMER PICNIC

St. Joseph Marelo Parish, 237 William St., Pittston, Thursday thru Sunday, July 18,19,20 from 5-10 pm on their picnic grounds. Porketta, Pizza Fritta, Potato Pancakes, Pizza, Cannoli, & much more. Thursday--The Taxmen (Beatles tribute band), Friday--Boots & Bangs, and Sat. a performance from the Joyce School of Irish Dance followed by Flaxy Morgan.

MISSION APPEALS WEEKEND JULY 20/21

More information in next week’s bulletin.



Ways to Give:



Online: www.setonpa.com



Mail to: St. Elizabeth Ann Seton Parish
116 Hughes St.,
Swoyersville, PA 18704

WEEKLY OFFERINGS:

WEEKEND OF June 22/23, 2024

REGULAR: \$7694.50 DUES: \$425.00

ASSESSMENT: \$80.00

DIOCESAN:

CARE & EDUCATION: \$160.00

St. Elizabeth Ann Seton Parish

www.setonpa.com

SAINT ELIZABETH ANN SETON PARISH FESTIVAL 2024

VOLUNTEER SIGN-UP SHEET

NAME (S): _____

PHONE: _____ Adult (over 21) _____ Student (age) _____

Please indicate the **area** you wish to work: **WHEREVER NEEDED:** _____ OR

FOOD: Ethnic Stand: _____ Kreple making: _____ Fast Food: _____

Potato Pancakes _____ Kitchen: _____ Runner: _____ Other (specify): _____

TICKET SALES: Raffle Tickets: _____

ADULT GAME STANDS: Instant Bingo: _____ Big 6 wheel: _____

GROUNDSKEEPING: _____ **GARBAGE DETAIL:** _____

KITCHEN CLEAN UP (dish machine/pots & pans): _____

Please indicate **day and time** that you wish to work:

Thursday, July 11

Friday, July 12

Saturday, July 13

4:45-8:00PM _____

4:45-8:00PM _____

4:45 -8:00PM _____

8:00-11:00PM _____

8:00-11:00PM _____

8:00-11:00PM _____

All Night _____

All Night _____

All Night _____

BINGO: _____ **6PM-9PM** _____ **8PM-11PM** _____ **ALL NIGHT** _____

CHILDREN'S GAMES: _____

Please note, due to Diocesan regulations, all volunteers under the age of 18 are required to be accompanied by an adult.

Please indicate **day and time** that you wish to work:

Thursday, July 11

Friday, July 12

Saturday, July 13

4:30-7:00PM _____

4:30-7:00PM _____

4:30-7:00pm _____

7:00-10:00PM _____

7:00-10:00PM _____

7:00-10:00pm _____

All Night _____

All Night _____

All Night _____

SET-UP CREW NEEDED

Please check out our bulletins for more information on dates and times for set up..

Morning Clean Up

Festival Days

Friday, July 12 _____

Saturday, July 13 _____

Take Down

Sunday July 14 _____

(Workers needed on Sunday morning

to help clear the area under the tent.

Please consider giving some time.)



BECOME DEBT FREE IN AS LITTLE AS 24-48 MONTHS

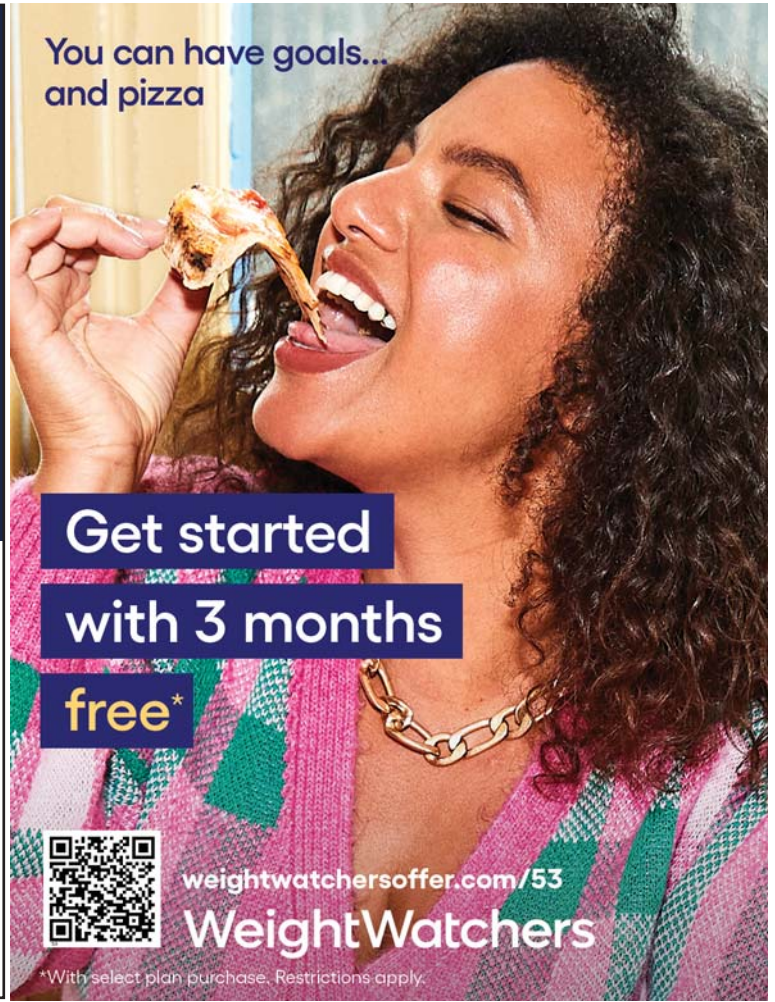
If you owe more than \$10,000 in credit card or other unsecured debt, see how National Debt Relief can help resolve your debt for a fraction of what you owe.

Call today:

+1 (866) 605-1934



You can have goals... and pizza



Get started with 3 months

free*



weightwatchersoffer.com/53

WeightWatchers

*With select plan purchase. Restrictions apply.

A Help Button Should Go Where You Go!



To be truly independent, your personal emergency device needs to work on the go.

MobileHelp® allows you to summon emergency help 24 hours a day, 7 days a week by simply pressing your personal help button. Unlike traditional systems that only work inside your home, a MobileHelp medical alert system extends help beyond the home. Now you can participate in all your favorite activities such as gardening, taking walks, shopping and traveling all with the peace of mind of having a personal alert system with you. MobileHelp, the "on-the-go" help button, is powered by one of the nation's largest cellular networks, so there's virtually no limit to your help button's range.

No landline? No problem! While traditional alert systems require a landline, with the MobileHelp system, a landline is not necessary. Whether you are home or away from home, a simple press of your help button activates your system, providing the central station with your information and location. Our trained emergency operators will know who you are and where you are located. If you're one of the millions of people that have waited for an alert service because it didn't fit your lifestyle, or settled for a traditional system even though it only worked in the home, then we welcome you to try MobileHelp. Experience peace of mind in the home or on the go.

GET OUR SPECIAL OFFER NOW:

- ✓ FREE EXPEDITED SHIPPING*
- ✓ FREE ONE MONTH SERVICE*
- ✓ 50% OFF AUTO FALL DETECT*
- ✓ plus FREE EQUIPMENT TO USE!*



Unlike "stay-at-home" emergency systems MobileHelp protects you:

Places where your Help Button will work	MobileHelp	Traditional Help Buttons
At Home	✓	✓
On a Walk	✓	✗
On Vacation	✓	✗
At the Park	✓	✗
Shopping	✓	✗

MobileHelp Features:

- Simple one-button operation
- Affordable service
- Amplified 2-way voice communication
- 24/7 access to U.S. based emergency operators
- GPS location detection
- Available Nationwide

OUR BEST OFFER EVER!
From \$19.95*
/month



MobileHelp

1-855-444-3698



*For a limited time - promotions available for select systems and subscription plans, please call for specific details. Offers are valid for new customers and for the first year of service and cannot be combined with any other offers. \$19.95 is the monthly subscription price for a MobileHelp Classic (at home only) system. There is a one-time \$49.95 processing fee to subscribe to the plan. Equipment shown is the MobileHelp DDD kit home and on the go system available at a higher monthly cost. Most equipment is included at no cost while actively subscribing and must be returned upon cancellation. Free one month of service offer valid with purchase of Annual plan and includes month 12 at no additional charge. Refer to terms and conditions for specific details. Depending on the promotion chosen, you may receive an additional savings of \$5.00 off the \$11 retail price of Fall Detection service. After first year, Fall Detection reverts to discounted price of \$8.25/month when combined with MobileHelp Connect Premium. Fall Detection does not detect 100% of falls. If able, users should push their help button when they need assistance. Fall detection is not intended to replace a caregiver. MobileHelp is a registered trademark, patented technology. Current GPS location may not always be available in every situation on the cellular network at all times. Expedited shipping offer is for Annual plans made prior to 3 PM EST Mon-Fri. Expedited shipping is standard 2-day - no deliveries on Saturdays/Sundays or to Hawaii or Alaska. Shipping delays may occur due to situations beyond our control. MFPH-01045 Rev. 1

WINDOW NATION

EXCLUSIVE MONEY SAVING OFFER

0 | 0 | 0%
DOWN | PAYMENTS | INTEREST

FOR 2 YEARS

AND

**BUY 2 WINDOWS
GET 2 FREE!**

SERVICE
99.5%
of our windows are installed right the first time, requiring no follow-up service.

SATISFACTION
96%
customer satisfaction on clean up & safety in over 150,000 homes.

SELECTION
1500+
locally-made, custom styles and options to choose from.

Call (855) 919-2625

*Offer Valid on Potomac and ComfortSmart Models. 4 Window Minimum. Cannot be combined with any other offer. Excludes labor. Based on 10 Georgetown model, Double hung/slider windows with standard installation. Subject for Credit Approval. Offer Ends 12/31/24. MA HIC #197968





Aaron W. Pietryka, *Licensed Supervisor - Parishioner*
 Thomas B. Wiedlich, *Licensed Director - Parishioner*

570-287-8541 | 1442 Wyoming Avenue, Forty Fort, PA
 www.wroblewskifuneralhome.com

BONNER

FIND NEW ROADS™
 NEW 287-2117
 USED 288-0319
 694 Wyoming Ave., Kingston, PA
 www.bonnerchevrolet.com

Holy Trinity
 Off of Warsaw Street
 &
St. Mary's
 Off of Brook Street
Cemeteries
 †
 Lots Available
 Interest Free
 payment plans

Please call the Parish Office for more information at 287-6624

B *Bednarski*
Funeral Home
 168 Wyoming Ave.
 Wyoming, PA
570-693-3851
Funeral Directors
 Joseph Bednarski
 Jacqueline Bednarski

HUGH B. HUGHES & SON, INC.
Funeral Home
 Michael W. Harrison, Supervisor / President
 Daniel R. Harrison, Funeral Director
 Traditional, Cremation & Pre-arranged Funerals
 570-288-9341
 1044 Wyoming Ave.
 Forty Fort, PA
 Visit our website at hughbhughes.com • Online condolences now available

WHEELS THAT HEAL!



Donate your car & make a positive difference in the lives of those affected by breast cancer.

- 24-hour free pick up
- 7 days a week
- Maximum tax deduction
- Running or not
- Se habla espanol

AD SPACE AVAILABLE
 617-779-3771

"Jesus Wept." John 11:35

First Catholic Slovak Union
 FCSU Financial® **NEW MEMBERS WELCOME!**

Annuities • Life Insurance • IRAs
 Wealth Transfer

Get \$10,000 term life insurance for \$14
 Find the rate that is right for you!

- 8 Year Flex Annuity or IRA **4.75%**
- 6 Year Fixed Annuity or IRA **5.00%**
- 2 Year Annuity **4.50%**

www.fcsu.com
 Martha Zavada: (570) 954-3771

C&B
 Landscaping Tree & Construction LLC
570-217-6944
 Call for your FREE estimate today!

- Tree removal
- Tree pruning
- Emergency storm damage
- Stump grinding
- Land clearing
- Cabling
- Tree diagnoses
- Tree planting
- Excavating
- Snow plowing

Follow Us

UNITED BREAST CANCER FOUNDATION

Call now
888-412-5794

Frank Grontkowski Monuments Inc.
 Established in 1942
 Family owned & operated



DEDICATED TO MEETING YOUR MONUMENT NEEDS
570-822-5574
grontkowskimonuments.com

Andy Peruginos
 FINE ITALIAN CUISINE
 Dinner to Pick-up Catering & Private Party Rooms Seating to 400

Early Dinners
 Tue-Thurs 4pm-6pm
 Open Tues-Saturday

- Family Atmosphere
- Made from Scratch Menu
- Reasonable Prices
- Large Portions!

258 Charles St. Luzerne, PA
www.andyperuginos.com
570-288-5337

DENTAL Insurance
 Get help paying big dental bills

Get your **FREE** Information Kit
 from Physicians Mutual Insurance Company.

1-888-404-1939
Dental50Plus.com/Seton

Product not available in all states. Contact us to see the coverage and offer available in your state. Contact us for complete details about this insurance solicitation including costs and limitations. This specific offer is not available in CO. Call 1-800-969-4781 or respond for a similar offer. In WV: To find a provider in the network visit us at <https://www.physiciansmutual.com/web/dental/find-dentist>. Certificate C250A (ID: C250E); Insurance Policy P150; Rider Kinds B438/B439. In CA, CO, ID, KY, ME, MD, MA, MI, MO, NV, NJ, NC, ND, VA: Includes Participating Providers and Preventive Benefits Rider. Certificate C254/B465 (PA: C254PA); Insurance Policy P154/B469 (GA: P154GA; OK: P154OK; TN: P154TN). 6323

Memorial Ads Available **617-779-3771**